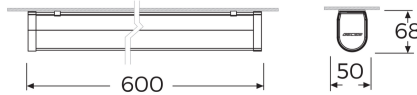
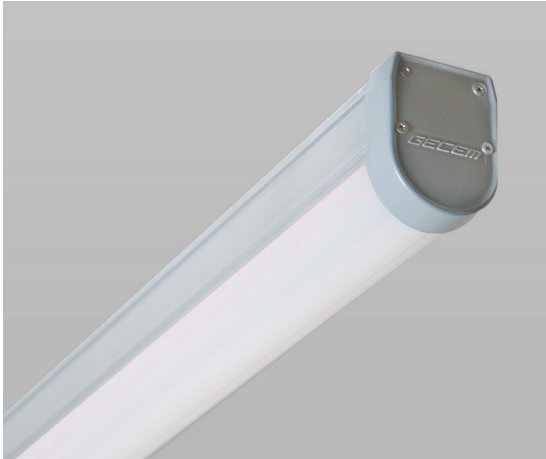


# ALUMA

## GCP 6020WA SG40



### Product Features and Key Data

<b>Applications :</b>	Warehouse - storage area - parking area - loading area - industrial area
<b>Luminaire Type :</b>	LED waterproof luminaire
<b>Mounting Method :</b>	Surface or suspension
<b>Luminaire Optic :</b>	PC diffuser
<b>Connected Load :</b>	20W
<b>Colour Temperature :</b>	4000K
<b>Rated Luminous Flux :</b>	2000 lm
<b>Luminous Efficiency :</b>	100 lm/W
<b>Power Factor :</b>	> 0,952
<b>CRI Value :</b>	> 80
<b>UGR :</b>	< 21 ( EN124664-1 )
<b>Photo Biological Class :</b>	Group 0 - No risk
<b>Luminaire Colour :</b>	Grey Color
<b>Luminaire Body :</b>	Aluminium body polycarbon glass.
<b>Electrical version :</b>	With electronic transformer, switchable.
<b>Connection method :</b>	Terminal
<b>Mains frequency :</b>	50/60 Hz
<b>Mains voltage :</b>	220 - 240 V
<b>Led Service ( 25° ) :</b>	L80 = 50.000 h
<b>Driver ( 220 - 240V ) :</b>	Tridonic, Osram, Gecem
<b>Ceiling Type :</b>	AB - Gypsum Ceiling TB - Modular Ceiling KB - Clip-in Ceiling
<b>Ingress Protection (IP) rating :</b>	IP65
<b>Protection class :</b>	I
<b>Impact resistance (IK) :</b>	IK08
<b>Hot wire resistance :</b>	650 °C
<b>Ambient temperature :</b>	-35 - 55 °C
<b>Options :</b>	1 - 3 Hours Emergency Kit, Dali Dimmible
<b>Accessories :</b>	Suspension Kit, Sensor